

Lawrence D Bell Aircraft Museum & Farmers State Bank

presents

BRANSON, MO.

UP CLOSE AND PERSONAL

April 12-16, 2015 (5 days)



Day 1: Travel Day to Rolla, MO with a surprise and tasty stop and a stay at the Drury Inn.



Day 2: Continue our Travel with a stop in Springfield, Mo at the **Fantastic Caverns**, discovered in 1862 by an Ozarks farmer - or more precisely, by his dog. Jeep-drawn trams take us on a ride all of the way through, experiencing the magnitude, the stillness, and the splendor of these magnificent caverns. In the afternoon we enjoy the very first and largest **Bass Pro Shop** store at almost 500,000 square. The store is dedicated to the beauty of the outdoors with art from local artists and craftsmen displayed

on all the walls and ceilings making the store part shopping experience and part art museum visit. A natural looking environment complete with waterfalls, springs and as many live fish as you can count. After checking into our **Grand Oaks Hotel** lodging for the next three nights, we enjoy a sit down Welcome Up Close Dinner at the Radisson Hotel.

You never know who might show up! Receive an Autographed Up Close and Personal T- Shirt.



Our Show this evening is the **Presley's Country Jubilee Show**. Branson's First Family of Entertainment will bring you an unforgettable show along with Herkimer & Cecil. After the show a private reception and opportunity to visit with the cast of the show and learn the brief history of their 48 years of performing. Receive a copy of the Presley Family Book too. **Day 3:** This morning we

enjoy a **3 hour guided tour** of the area. See Shepherd of the Hills Trout Hatchery, College of the Ozarks and Old Downtown Branson including Dick's 5 & 10. Lunch at Jackie B Goode's Uptown Café. In the afternoon we enjoy the **Sight and Sound Theater's JONAH**. A show full of surprises set 700 years before the birth of Christ. The journey of Jonah, a

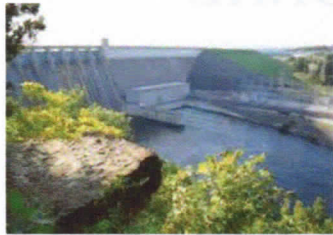
faithful, righteous prophet of God, begins when he disobeys God and runs away from the Lord. His adventure takes him through a terrible storm, an encounter with an enormous fish, his new life in a wicked empire and the struggles he faces through what becomes the greatest revival in history. Dinner is at **Gilley's Burgers & Barbecue** before



our evening show - **Mickey Gilley Up Close**. Easily the best two hours of music and comedy. You'll love hearing the stories, songs and the way he chuckles. His staff create an interactive skit with you and there'll be treats and fun galore!



Day 4: Start our day at **The Bretts Up Close 2015** show. This unique experience will include lunch at the theatre and a special presentation "What It has taken to become a Performing Family" after the show along with a Q & A with the Bretts. Take home a beautiful picture personally autographed by the family. We'll take a drive to **Table Lack Rock Dam and the Dewey Short Visitor Center**. Called the "crown jewel" of Table Rock Lake, Exhibits at



the visitor center include a state-of-the-art interactive map of Table Rock Lake, beautiful artistic wall murals, and a replica of an Ozarks bluff complete with local flora and fauna. A Native American artifact exhibit and Ozarks dioramas are fascinating features of the interpretive center. We'll see a video of the workings of the dam and the native Americans of the area. Also an expansive cut-away model revealing the inner workings of a hydroelectric dam. A lovely dinner at the Uptown Café

before our final show - **Clay Cooper's Country Express**. Clay and his cast of 20 veteran entertainers along with his 7 piece band will light up the stage with singin' dancin' gun-slingin' rope-twirlin' percussion and hysterical comedy. After The show, get up close and personal with Clay and Tina and hear how they got into the entertainment business. Take home an autographed photo. **Day 5:** We travel home today with Branson Up Close and Personal Grand Memories and Wonderful Friendships.



Tour Includes: All Shows & Attractions, 10 meals(4 Hot Breakfasts, 2 Lunches, 4 Dinners), 4 Nights Quality Lodging, Luggage Handling 1pc. Travel via Motorcoach, Escorted by S & S Travel, Inc.



Cost per person:

Double \$857., Triple \$804., Quad \$778., Single \$1016.
 Deposit of \$50.00 per person with reservation. Balance Due March 12, 2015.

Make Checks Payable To:
 Lawrence D Bell Museum

Mail To:
 Farmers State Bank
 Attn. Deb Albright
 P. O. Box 455
 Mentone, In 46539

For More Information Call:
 Linda Cochran @ 574-353-7113
 S & S Travel, Inc @ 888-262-4423

Depart Warsaw and Mentone, Times TBD



Return Reservation Form: Bell Aircraft Museum/Farmers State Bank BRANSON April 12-16, 2015

Name _____ Address _____

City _____ State _____ Zip _____ Phone _____

Deposit of \$ _____ for _____ People Names of person sharing room _____

_____ Pick Up Location (circle) Mentone Warsaw